



# BIOVISTA

9276 & 9330 SCRANTON ROAD

NEWMARK



LONGFELLOW™



# IT'S IN OUR DNA

16.5+ MILLION SF NATIONAL PORTFOLIO

Longfellow is a vertically integrated life science real estate developer and operator with a unique ability to offer a holistic suite of real estate services to our tenant partners. Our development expertise allows us to effectively deliver state-of-the-art campuses, buildings, and lab spaces with a collaborative approach.

**DEVELOPMENT**


Strategy & Partnerships  
Advisory & Entitlements  
Acquisitions & Conversions

**MANAGEMENT**

Leasing  
Project Management  
Property Management

**INVESTMENTS**

Asset Management  
Investment Management

 **LONGFELLOW**

**West**  
San Diego  
Bay Area

**Southeast**  
Research Triangle  
Durham

**Northeast**  
Cambridge  
New York City  
Philadelphia  
Rockville

**United Kingdom**  
Cambridge



SOVA Science District | San Diego, CA



Center East - New York Blood Center | New York, NY



Durham.ID | Durham, NC (Completed 2018)



SOVA Science District | San Diego, CA





# BIOVISTA

A HUB OF CONNECTIVITY –  
WHERE PEOPLE AND IDEAS MEET AND FLOURISH

## 01 | SOPHISTICATED POSITIONING

As Longfellow's top tier life science campus, Biovista is uniquely positioned to provide San Diego's forward-thinking life science community a best-in-class facility with the perfect mix of lifestyle offerings.

## 02 | UNIQUE SORRENTO MESA LOCATION

Biovista has unparalleled freeway visibility along with spectacular window views. Located at the heart of the region's biotech industry, Biovista is at the epicenter of Longfellow's 1.3 million square foot San Diego life science portfolio.

## 03 | CONNECTIVITY & AMENITIES

San Diego's critical mass of talent and top-ranking institutions fuel the area's robust life science ecosystem, making it a premier market for new and established companies. Tenants will enjoy unparalleled amenities, programs, and services curated by the Longfellow Elevate™ team.

## 04 | SAN DIEGO LIFESTYLE

The unrivaled climate of San Diego makes it one of the best places to live on the West Coast. The area is known for its plethora of beautiful beaches, gourmet cuisine, and affordable neighborhoods. Biovista incorporates these characteristics into the overall tenant experience.



# ELEVATE

It's Not What We Do.  
It's Not How We Do It.  
It's Who We Are.



No one goes to work just to work anymore, so we've made it our mission to deliver an experience that reaches far beyond the status quo. When a tenant commits to a Longfellow property, we commit to them. From modern collaborative workspaces, to informative, enriching experiences, to convenient lifestyle amenities, they are all purposefully designed to impact their daily journey. Elevate will surprise, inspire, and accommodate even our most discerning tenants.

## BALANCE

Fitness Classes  
Wellness Events & Workshops  
Walking And Running Trails

## ACCESS

Car Detailing Services  
On-Site Dry Cleaning  
Mobile Hospitality Services

## TASTE

Rotating Food Trucks  
Beer & Wine Tastings

## BRAIN POWER

Lunch & Learn Workshops  
Ted Talks  
Fully Equipped Meeting Spaces

## GENEROSITY

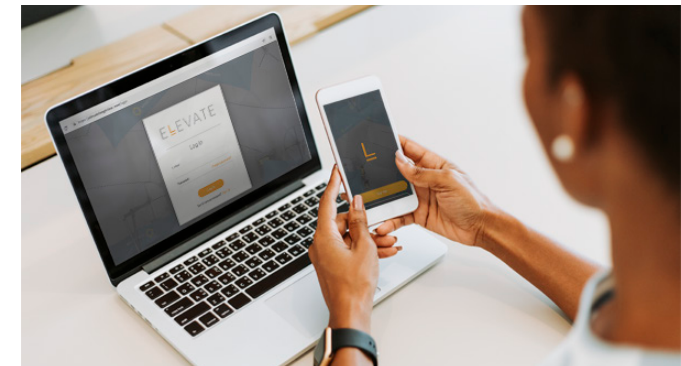
Donation Collections  
E-Waste Recycling  
Blood Drives

## CONNECTIONS

Networking & Happy Hours  
Seasonal Events  
New Tenant Welcome Tours & Gifts

## PLAY

Tenant Competitions & Prizes





# REGIONAL LOCATION

A VARIETY OF OUTDOOR RECREATION AND PLACES TO EXPLORE

23 MIN

DRIVE TO SAN DIEGO AIRPORT

I-5 & I-805

EASY ACCESS FROM BIOVISTA

4 MIN

DRIVE TO WESTFIELD UTC

WITHIN 5 MIN WALK

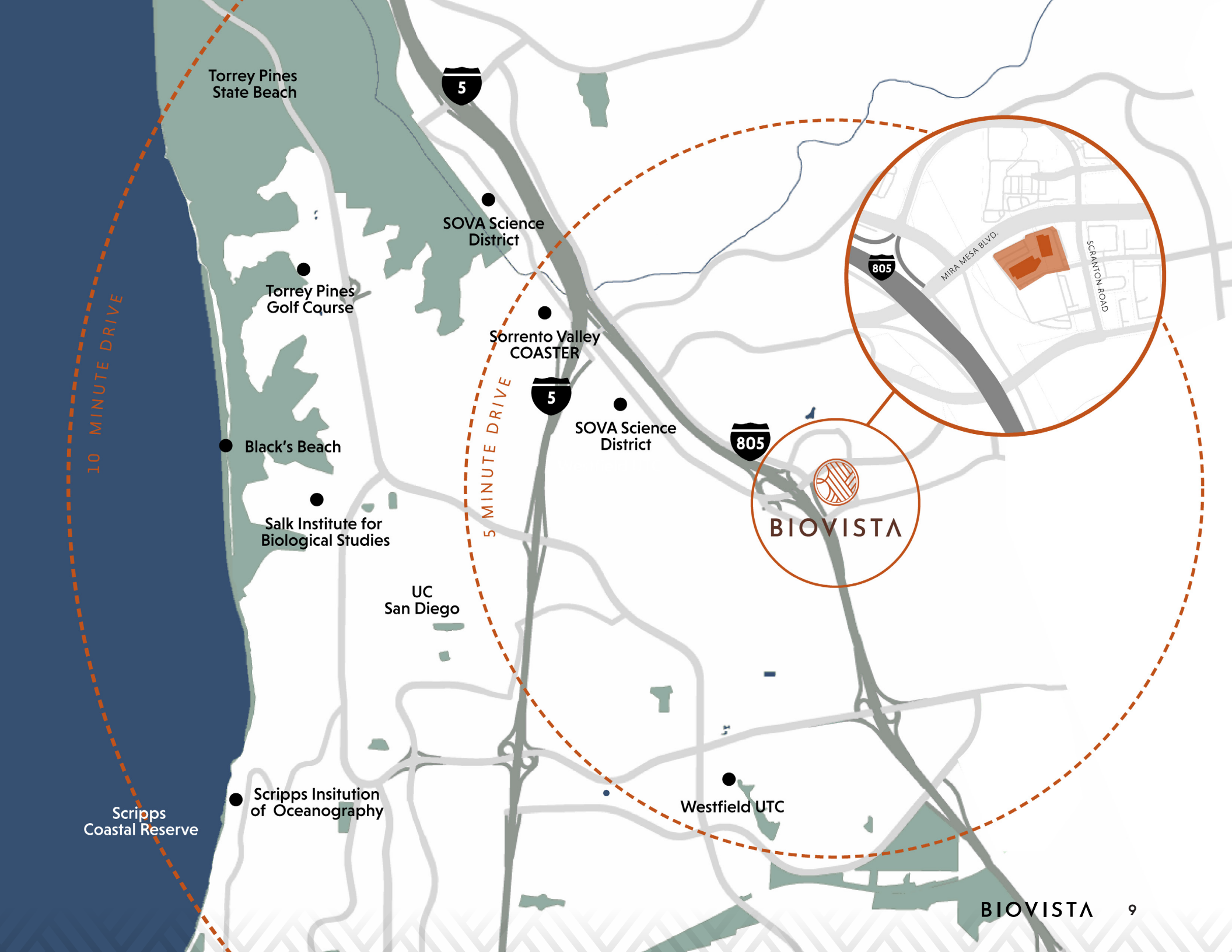
- Chick-Fil-A
- Rubio's Coastal Grill
- Greek Café
- Croutons
- Punjabi Tandoor
- Starbucks
- Planet Fitness
- Bank of America

WITHIN 5 MIN DRIVE

- Karl Strauss Brewing Company
- The Greenspot Salad Company
- Seasons 52
- Gravity Heights
- Westfield UTC Mall

NEAREST COASTER STOP TRANSIT

Four MTS shuttles are available to transport passengers to and from the Sorrento Valley COASTER station and companies in the area. These COASTER Connections serve parts of Sorrento Valley, Sorrento Mesa, Carroll Canyon, Carroll Mesa/Campus Point, Torrey Pines, and University City, Monday through Friday.





# WEST TOWER AVAILABILITY

9330 SCRANTON ROAD



## SCIENCE WITH A VIEW.

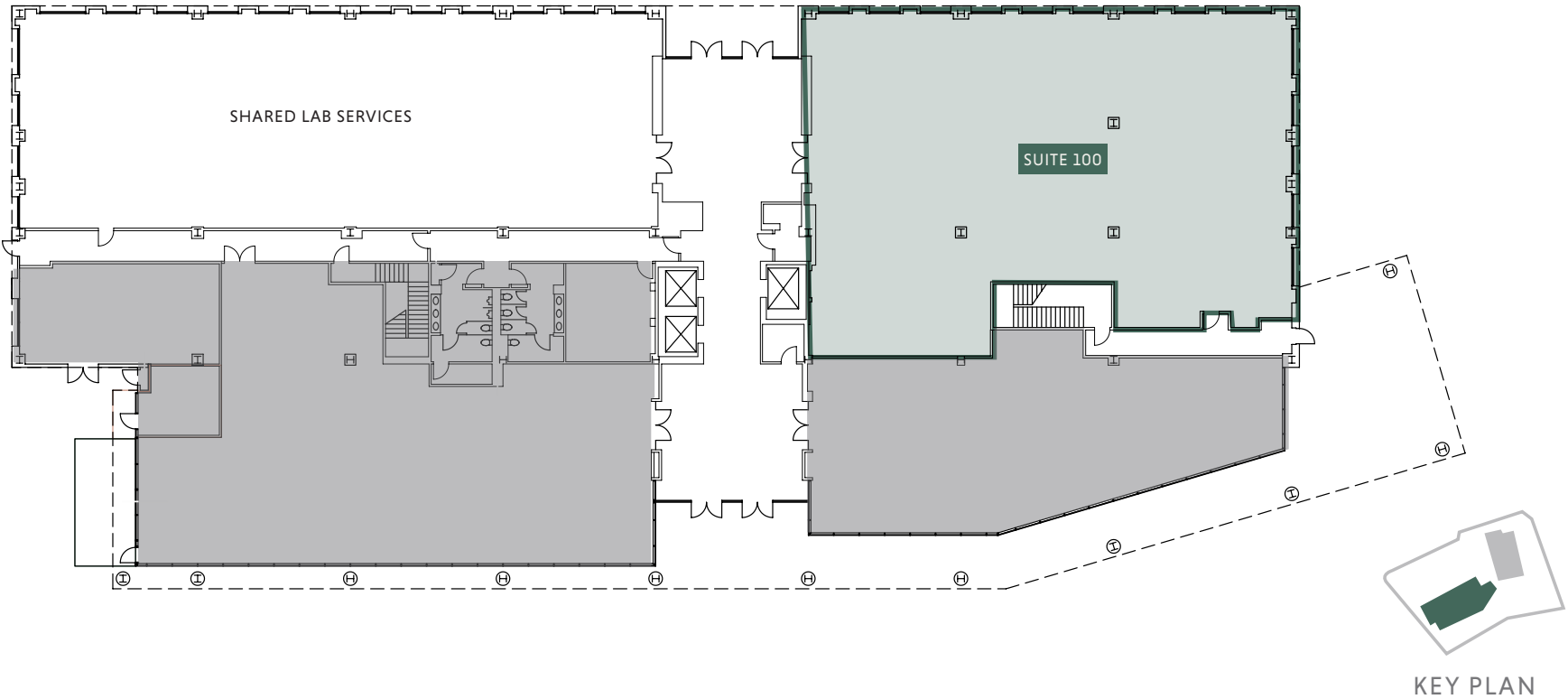
Biovista is a Class A lab workspace with a premier location in Sorrento Mesa. The campus offers extensive views and has unmatched visibility and access from the I-805.

FLOOR 1	FLOOR 3	FLOOR 4
Suite 100 ±7,309	Suite 300 ±17,955 SF	Suite 400
Shell Condition - Future Lab	Suite 325 ±15,955 SF	31,975 SF
Vacant August 2023	Two-tenant Spec Suite	Spec Lab Delivering
	Delivering Q4–2023	October 2023

■ AVAILABLE SPACES

# WEST TOWER

9330 SCRANTON ROAD | SUITE 100 FLOOR PLAN



	SUITE	SQ FT
• SHELL CONDITION - FUTURE LAB VACANT AUGUST 2023	100	±7,309 SF



# WEST TOWER

9330 SCRANTON ROAD | SUITE 3RD FLOOR PLAN

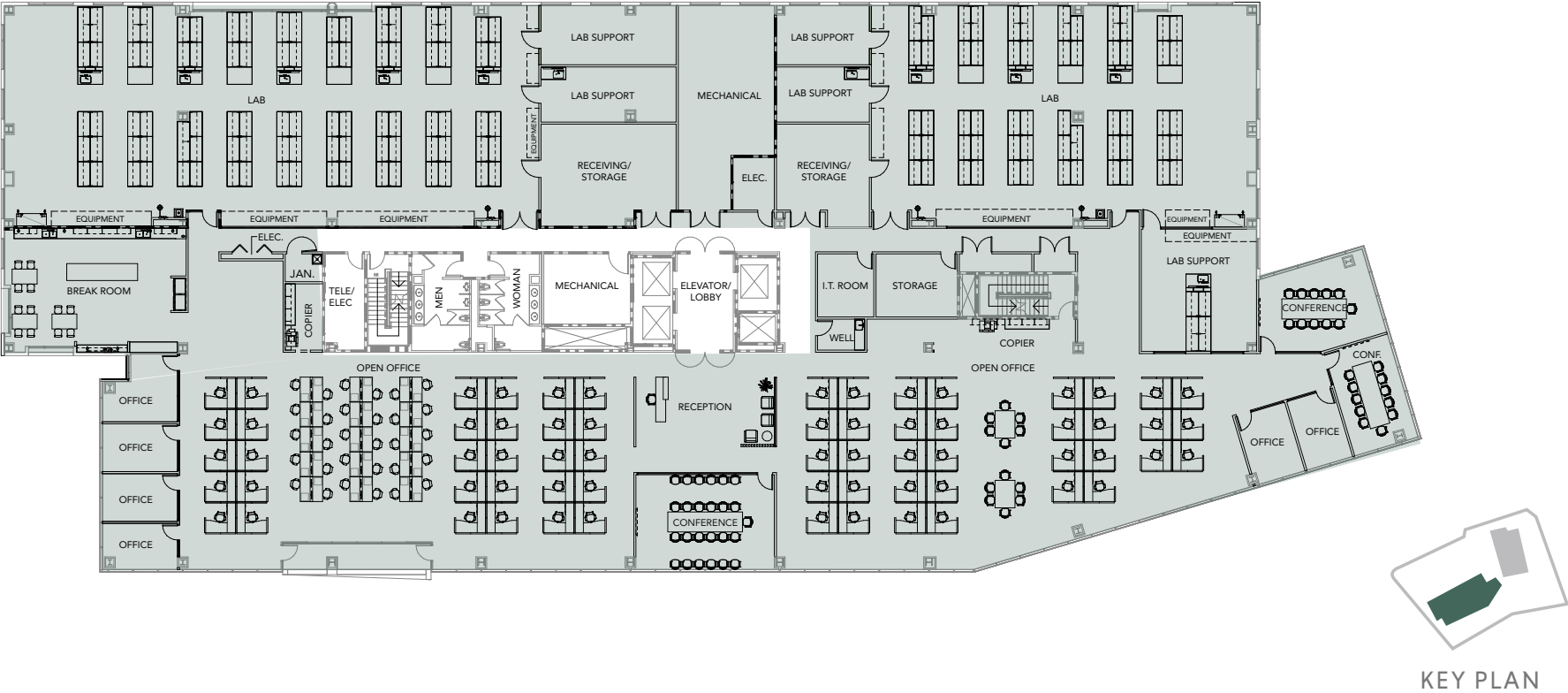


		SUITE	SQ FT	
• TWO-TENANT SPEC SUITE DELIVERING Q4-2023	3RD FLOOR	300	±17,955 SF	■ AVAILABLE SPACE
	3RD FLOOR	325	±15,995 SF	





WEST TOWER  
9330 SCRANTON ROAD | SUITE 400 FLOOR PLAN



• SPEC LAB DELIVERING  
OCTOBER 2023

4 <sup>TH</sup>	400	31,975	AVAILABLE SPACE
FLOOR	SUITE	SQ FT	



BIOVISTA

Procuring broker shall only be entitled to a commission, calculated in accordance with the rates approved by our principal only if such procuring broker executes a brokerage agreement acceptable to us and our principal and the conditions as set forth in the brokerage agreement are fully and unconditionally satisfied. Although all information furnished regarding property for sale, rental, or financing is from sources deemed reliable, such information has not been verified and no express representation is made nor is any to be implied as to the accuracy thereof and it is submitted subject to errors, omissions, change of price, rental or other conditions, prior sale, lease or financing, or withdrawal without notice and to any special conditions imposed by our principal.

**CHRIS HIGH, SIOR**  
Senior Managing Director  
t 858-875-3604  
chris.high@nmrk.com  
CA RE Lic. #01734544

**STEVE BRUCE**  
Senior Managing Director  
t 858-875-3605  
steve.bruce@nmrk.com  
CA RE Lic. #01455744

**CONOR EVANS**  
Associate Director  
t 858-875-3607  
conor.evans@nmrk.com  
CA RE Lic. #01963596

CORPORATE LICENSE #01355491

